

Brachycephalic Airway Syndrome

Brendan McKiernan, DVM, Dip. ACVIM

- **Definition** – a series of obstructive and typically progressive airway abnormalities affecting all brachycephalic breeds

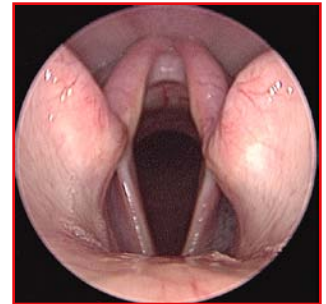
- **Breeds commonly affected** –

- Bulldogs – English, American, French
- Pug
- Boston
- Boxer
- Himalayan



- **Components** –

- * Stenotic nares
- * Elongated soft palate
- Mucosal edema
- * Eversion of the lateral ventricles (saccules)
- * Laryngeal collapse
- Tracheal hypoplasia
- Nasopharyngeal turbinates



- **Clinical signs** –

- Snoring
- Wheezing
- Coughing
- Hyper-somnolence
- Choking, spitting food out
- Exercise and heat intolerance



- **Complications** –

- Progressive “micro-trauma” to the airway mucosa
- Increased work of breathing – exercise intolerance
- Structural failure (laryngeal collapse)
- Secondary effects on the heart
- Pulmonary hypertension



- **Treatment** –

- Corticosteroids - to temporarily reduce inflammation/edema
- Surgical intervention for some conditions (those with * above)
- Weight management – obesity worsens clinical condition & signs
- No treatment for some of the components (those in blue)
- Breeding practices -